



Luminaire

Mila-S

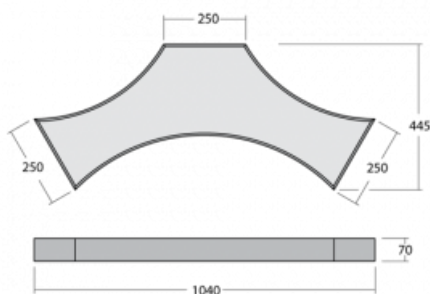
101-521K-10GKE/830, B



None of this would have been possible without the latest LED technology, which is hidden inside aluminum profiles in white, black or silver. The hidden light source does not create shadows. Thanks to the possibility of dimming, the luminaire is great for showrooms, offices and a variety of representative spaces. Even the naming of this lighting system is perfectly thought out, as Mila in Italian means a thousand.

Design Rob van Beek

Technical drawing



Type of installation	Surface, Wall mounted, Suspended
Light distribution	Direct
Luminaire shape	Other shape
Colour of the luminaires	Black
Material	Aluminium
Lifetime	L80/B20 50 000 hours
Warranty	60 months
Description of luminaires	Luminaire surface/wall mounted/suspended
Dimensions	1040 mm × 445 mm × 70 mm
Weight	7.4 kg
Light source	LED MODUL
Type of optical system	Opal diffuser
Luminous flux	4620 lm ± 10 %
Colour Temperature	3000 K warm white
Luminous efficacy test	73 lm/W
MacAdam Light source	3
Colour rendering index	80
UGR max. X=4H Y=8H, ρ=70,50,20	21.2

Curve



Luminaire power input 63.2 W ± 10 %

Connection of the luminaires Electronic ballast non-dimmable

Electrical voltage 220-240V

Frequency 50-60Hz

⊕ CE IP 20

Downloads

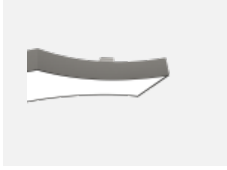
Installation instructions



Photos



Accessories



101-0001, B
accessory for creating of distance between mounting surface



101-0002, N
wire suspension 2000 mm, 2 wires



101-0007, N
wire suspension 4000 mm, 2 wires



101-0008, N
wire suspension 6000 mm, 2 wires



101-0011
cable 3x 0,75 mm with WAGO connector



101-0013, B
transparent cable 3x 0,75 mm, 2m with WAGO connector



101-0015, B
transparent cable 3x 0,75 mm, 6m with WAGO connector