


**Luminaire**

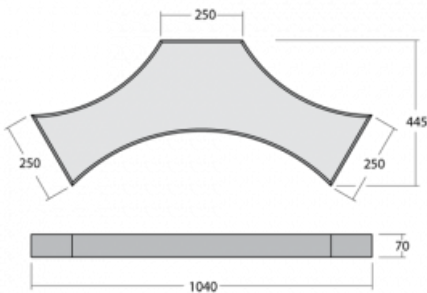
# Mila-S

101-521K-10GKE/840, B



None of this would have been possible without the latest LED technology, which is hidden inside aluminum profiles in white, black or silver. The hidden light source does not create shadows. Thanks to the possibility of dimming, the luminaire is great for showrooms, offices and a variety of representative spaces. Even the naming of this lighting system is perfectly thought out, as Mila in Italian means a thousand.

Design Rob van Beek

**Technical drawing**


Type of installation	Surface, Wall mounted, Suspended
Light distribution	Direct
Luminaire shape	Other shape
Colour of the luminaires	Black
Material	Aluminium
Lifetime	L80/B20 50 000 hours
Warranty	60 months
Description of luminaires	Luminaire surface/wall mounted/suspended
Dimensions	1040 mm × 445 mm × 70 mm
Weight	7.4 kg
Light source	LED MODUL
Type of optical system	Opal diffuser
Luminous flux	4820 lm ± 10 %
Colour Temperature	4000 K cool white
Luminous efficacy test	76 lm/W
MacAdam Light source	3
Colour rendering index	80
UGR max. X=4H Y=8H, ρ=70,50,20	21.4

## Curve



Luminaire power input 63.2 W ± 10 %

Connection of the luminaires Electronic ballast non-dimmable

Electrical voltage 220-240V

Frequency 50-60Hz

⊕ CE IP 20

## Downloads

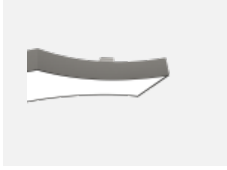
Installation instructions



Photos



## Accessories



**101-0001, B**  
accessory for creating of  
distance between  
mounting surface



**101-0002, N**  
wire suspension 2000  
mm, 2 wires



**101-0007, N**  
wire suspension 4000  
mm, 2 wires



**101-0008, N**  
wire suspension 6000  
mm, 2 wires



**101-0011**  
cable 3x 0,75 mm with  
WAGO connector



**101-0013, B**  
transparent cable 3x  
0,75 mm, 2m with WAGO  
connector



**101-0015, B**  
transparent cable 3x  
0,75 mm, 6m with WAGO  
connector